

CentralTM Semiconductor Corp.

145 Adams Ave., Hauppauge, NY 11788 USA
Phone (516) 435-1110 FAX (516) 435-1824

Manufacturers of World Class Discrete Semiconductors

MPQ3725

NPN SILICON QUAD TRANSISTOR

JEDEC TO-116 CASE

DESCRIPTION

The CENTRAL SEMICONDUCTOR MPQ3725 type is comprised of four independent silicon transistors mounted in a 14 PIN-DIP case, designed for core driver applications.

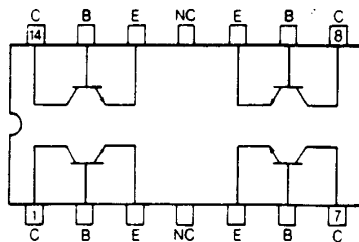
MAXIMUM RATINGS (T_A=25°C)

	SYMBOL		UNIT
Collector-Base Voltage	V _{CES}	60	V
Collector-Emitter Voltage	V _{CEO}	40	V
Emitter-Base Voltage	V _{EBO}	5.0	V
Collector Current	I _C	1.0	A
Power Dissipation (each transistor)	P _D	1.0	W
Power Dissipation (total package)	P _D	2.5	W
Operating and Storage Junction Temperature	T _J , T _{STG}	-65 TO +150	°C

ELECTRICAL CHARACTERISTICS (T_A=25°C)

SYMBOL	TEST CONDITIONS	MIN	MAX	UNIT
I _{CBO}	V _{CB} =40V		500	nA
BV _{CES}	I _C =100μA	60		V
BV _{CEO}	I _C =10mA	40		V
BV _{EBO}	I _E =10μA	5.0		V
V _{CE(SAT)}	I _C =500mA, I _B =50mA	-	0.45	V
V _{BE(SAT)}	I _C =500mA, I _B =50mA	0.80	1.0	V
h _{FE}	V _{CE} =1.0V, I _C =100mA	35	200	
h _{FE}	V _{CE} =2.0V, I _C =500mA	25	-	
f _T	V _{CE} =10V, I _C =50mA, f=100MHz	250		MHz
t _{ON}	V _{BE(OFF)} =3.8V, I _C =500mA, I _{B1} =50mA		35	ns
t _{OFF}	I _C =500mA, I _{B1} =I _{B2} =50mA		60	ns
C _{ob}	V _{CB} =10V, I _E =0, f=1.0MHz		10	pF
C _{ib}	V _{EB} =0.5V, I _C =0, f=1.0MHz		80	pF

CONNECTION DIAGRAM



OUTSTANDING SUPPORT AND SUPERIOR SERVICES



PRODUCT SUPPORT

Central's operations team provides the highest level of support to insure product is delivered on-time.

- Supply management (Customer portals)
- Inventory bonding
- Consolidated shipping options
- Custom bar coding for shipments
- Custom product packing

DESIGNER SUPPORT/SERVICES

Central's applications engineering team is ready to discuss your design challenges. Just ask.

- Free quick ship samples (2nd day air)
- Online technical data and parametric search
- SPICE models
- Custom electrical curves
- Environmental regulation compliance
- Customer specific screening
- Up-screening capabilities
- Special wafer diffusions
- PbSn plating options
- Package details
- Application notes
- Application and design sample kits
- Custom product and package development

REQUESTING PRODUCT PLATING

1. If requesting Tin/Lead plated devices, add the suffix " TIN/LEAD" to the part number when ordering (example: 2N2222A TIN/LEAD).
2. If requesting Lead (Pb) Free plated devices, add the suffix " PBFREE" to the part number when ordering (example: 2N2222A PBFREE).

CONTACT US

Corporate Headquarters & Customer Support Team

Central Semiconductor Corp.
145 Adams Avenue
Hauppauge, NY 11788 USA
Main Tel: (631) 435-1110
Main Fax: (631) 435-1824
Support Team Fax: (631) 435-3388
www.centrasemi.com

Worldwide Field Representatives:
www.centrasemi.com/wwreps

Worldwide Distributors:
www.centrasemi.com/wwdistributors

For the latest version of Central Semiconductor's **LIMITATIONS AND DAMAGES DISCLAIMER**, which is part of Central's Standard Terms and Conditions of sale, visit: www.centrasemi.com/terms